



# MONTHLY MEMBERSHIP PROGRESS REPORT

District 325A1

Results as of: 09/30/2017

GMT: KHAGENDRA SITLAULA

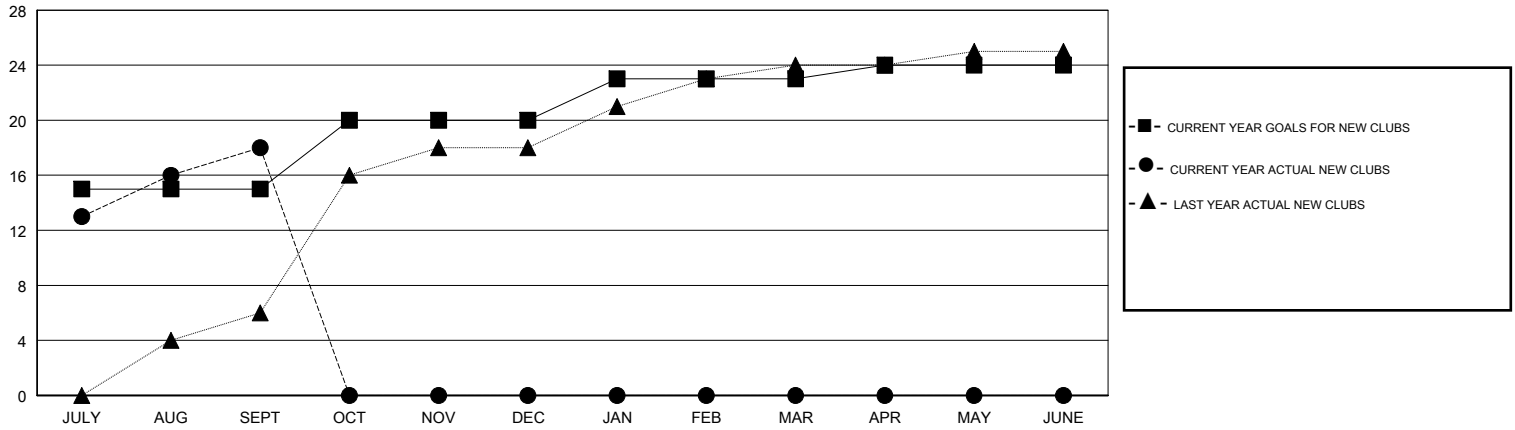
LOCATION NEPAL

GMT CA

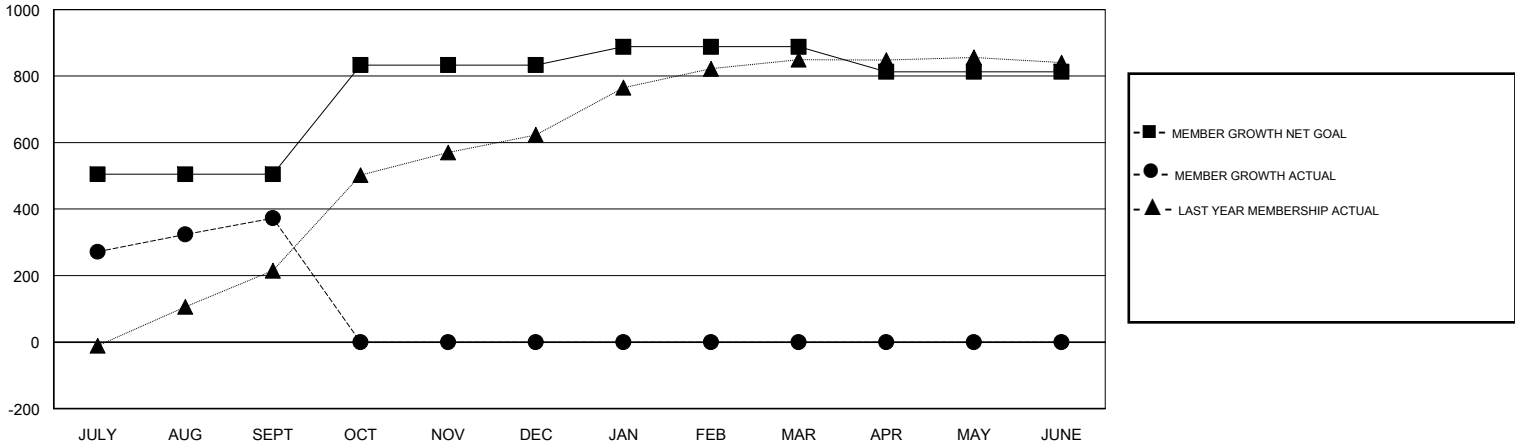
Clubs			
RESULTS FOR 2017-2018			
QUARTER	NEW CLUB GOAL	NEW CLUBS	DROPPED CLUBS
JULY/AUG/SEPT	15	18	0
OCT/NOV/DEC	5	0	0
JAN/FEB/MAR	3	0	0
APR/MAY/JUNE	1	0	0

Members			
RESULTS FOR 2017-2018			
QUARTER	MEMBER GROWTH NET GOAL	MEMBER GROWTH ACTUAL	DROPPED MEMBERS ACTUAL (including transfers)
JULY/AUG/SEPT	505	541	168
OCT/NOV/DEC	328	0	0
JAN/FEB/MAR	55	0	0
APR/MAY/JUNE	-75	0	0

GOALS AND ACTUAL NEW CLUBS CUMULATIVE



GOALS AND ACTUAL MEMBERS CUMULATIVE



DROPPED CLUBS: 0	59 CLUBS OF 147 ADDED 1 OR MORE NEW MEMBERS	<u>GENDER DISTRIBUTION</u>	
DROPPED MEMBERS		MALE	3,212 (73.55%)
DECEASED	3	FEMALE	1,155 (26.45%)
CLUB CANCELLED	0	Women Percentage Fiscal Year Goal: 28%	
OTHER	165	TOTAL FAMILY UNIT MEMBERS	
TOTAL	168	1,899	
<a href="#">CLICK HERE FOR CUMULATIVE MEMBERSHIP DATA</a>		FAMILY MEMBERS PAYING HALF DUES	
		1,179	